

ISCCM Delhi & NCR

USLS BL1 ~ PROVIDER

# ULTRASOUND LIFE SUPPORT

'USCMC LEVEL 1' CERTIFICATION SKILL SET  
ENTRY COURSE FOR 'USLS BL1-P'  
[ULTRASOUND LIFE SUPPORT - BASIC LEVEL 1 PROVIDER]



**19th – 20th December 2014, Gurgaon**  
**Venue: 2nd Floor Auditorium,**  
**Medanta The Medicity, Gurgaon**

**ABCDE ULTRASOUND RESUSCITATION**

**Ultrasound Life Support**  
**Basic level 1 provider (USLS BL1P)**

**19<sup>th</sup> - 20<sup>th</sup> December, 2014**

**2<sup>nd</sup> Floor Auditorium, Medanta The Medicity, Gurgaon**

*Improving Primary, Emergency, and Critical Care Medicine, by  
incorporating 'point-of-care' Ultrasound into Clinical Practice*

**TARGET AUDIENCE**

This continuing education activity is intended to meet the needs of intensivists, anesthesiologists and emergency physicians and all other providers who care for patients in any setting where critical care is provided.

**LEARNING OBJECTIVES**

- ✓ To gain a basic understanding of “point of care” ultrasound
- ✓ To practice acquisition of high-quality images via hands-on exercise
- ✓ To acquire knowledge for image interpretation and utilization of ultrasound as a diagnostic, therapeutic and monitoring bedside tool

## **WINFOCUS (World Interactive Network Focused On Critical UltraSound)**

*The world leader scientific organization committed to develop point-of-care ultrasound practice, research, education, technology, and networking, addressing the needs of patients, institutions, services, and communities in “critical” scenarios.*

### **“CRITICAL ULTRASOUND”**

The concept of '*critical ultrasound*' evolved recently from '*emergency ultrasound*' performed at the 'point-of-care' in scenarios such as emergency departments, ICUs, pre-hospital care, austere environments, disaster scenes, tactical operations, and humanitarian care missions.

Clinical scenarios turn into 'critical' ones when there is a dangerous performance gap between the patient status and the resources available for an appropriate decision making and problem solving.

In such settings ultrasound point-of-care image acquisition and interpretation, integrated with advanced life support protocols (ACLS, ATLS) according 'ABCDE' and 'Head-to-toes' –type approaches, allows for rapid and effective decision making, enhanced triage, diagnosis, therapy, monitoring, and follow up. Nowadays, that's approach is also known as 'Ultrasound Life Support'.

This typically occurs in the acutely ill patient (*Emergency US*) or intensive (*Intensive/Critical Care US*), and/or where human or technical resources are particularly limited (*Screening US, TriageUS, Remote US, Primary US*).

Dr Deepak Govil *Course Director*

Dr. Shrikanth Srinivasan *Course Co-Director*

Dr. Sachin Gupta *Course Co-Director*

Dr Ankit Sharma *Course Coordinator*

Dr. Sweta Patel *Faculty*

Dr. Jagadeesh KN *Faculty*

Dr. Manuj Sodhi *Faculty*

# ULTRASOUND LIFE SUPPORT BASIC LEVEL 1 PROVIDER COURSE

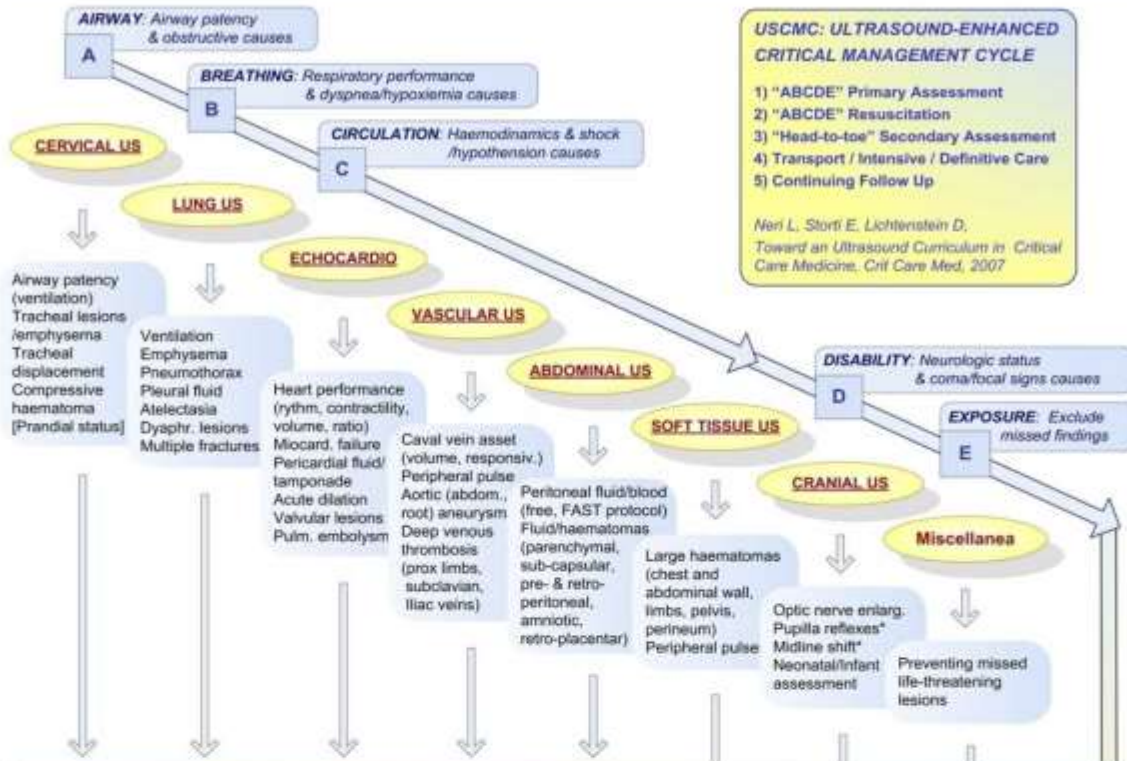
19th – 20th December, 2014

2nd Floor Auditorium, Medanta The Medicity, Gurgaon

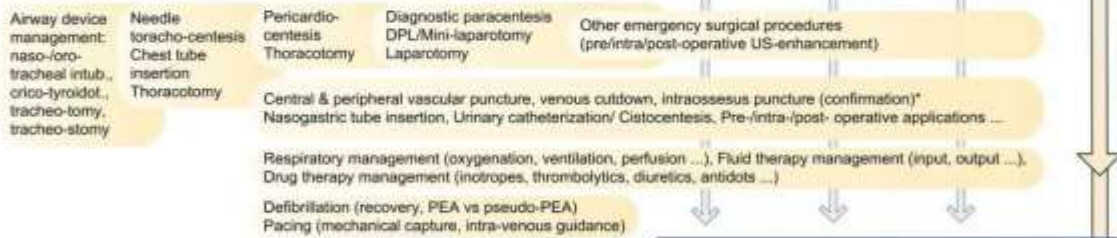
19th December, 2014			20th December, 2014		
<b>08:00</b>			<b>08:15</b>		
<b>REGISTRATION, PRE-COURSE TEST</b>			<b>REVIEW, Q/A</b>		
<b>I N T R O</b>	08:30	<i>Point-of-care UltraSound: empowering primary, Emergency &amp; critical care worldwide.</i> <b>Dr Deepak Govil</b>	<b>C I R C U L A T I O N</b>	08:30	<b>ASSESSMENT:</b> Peritoneal, pleural & pericardial effusion: FAST windows.  <b>PROCEDURES:</b> Paracentesis, DPL, laparotomy.  <b>MANAGEMENT:</b> <i>Cardio-circulatory Protocols &amp; Interactive Cases [FAST, EFAST, FAST-ABCDE]</i>  <b>Dr Sweta J. Patel</b>
	08:50	<i>Ultrasound techniques: image generation, acquisition, interpretation &amp; administration.</i> <b>Dr Ankit Sharma</b>		09:20	<b>ASSESSMENT:</b> Abdominal & thoracic aortic aneurysm, dissection and rupture. <b>Dr Sweta J. Patel</b>  <b>ASSESSMENT:</b> Deep venous system: deep venous thrombosis, pulmonary embolism.  <b>Dr Manuj Sodhi</b>
<b>A I R W A Y</b>	09:20	<b>ASSESSMENT:</b> Obstruction/atelectasis, tracheal displacement and lesions, SC emphysema. Prandial status.  <b>PROCEDURES:</b> ET intubation, crico-thyroidotomy, tracheo-tomy/-stomy.  <b>MANAGEMENT:</b> Airway Protocols & Interactive Cases [US-AIR] <b>Dr Sachin Gupta</b>	<b>D I S A B I L I T Y</b>	10:00	<b>PROCEDURES:</b> Peripheral & central venous catheterization. <b>Dr Shrikanth Srinivasan</b>
	09:50	<b>ASSESSMENT:</b> Pleural effusion, alveolar consolidation, interstitial syndrome, pneumothorax. Diaphragm impairment. Costal & sternum fractures.  <b>PROCEDURES:</b> Needle aspiration, thoraco-centesis, chest tube insertion, thoracotomy  <b>MANAGEMENT:</b> <i>Respiratory Protocols &amp; Interactive Cases [BLUE, FALLS]</i>  <b>Dr Shrikanth Srinivasan</b>		10:20	<b>ASSESSMENT:</b> Optic nerve & pupil abnormalities, midline shift, cervical fracture, diaphragm impairment. Notes on focused TCD.  <b>MANAGEMENT:</b> <i>Neurological Protocols &amp; Interactive Cases [US-NEU]</i>  <b>Dr Ankit Sharma</b>
<b>10:40</b>			<b>10:40</b>		
<b>COFFEE BREAK</b>			<b>COFFEE BREAK</b>		
<b>H A N D S O N</b>	11:00	<b>ULTRASOUND PRACTICE:</b> Machine orientation. Airway, Breathing. <b>ALL FACULTY</b>	<b>H A N D S O N</b>	11:00	<b>ULTRASOUND PRACTICE:</b> Circulation, Disability.  <b>ALL FACULTY</b>
	13:00	<b>LUNCH BREAK</b>		13:00	<b>LUNCH BREAK</b>
<b>C I R C U L A T I O N</b>	14:00	<b>ASSESSMENT:</b> Introduction to echocardiography: Goals, indications and limitations, cardiac and caval vein windows. <b>Dr Deepak Govil</b>	<b>ULTRASOUND SECONDARY MANAGEMENT &amp; MONITORING</b>		
	14:40	<b>ASSESSMENT:</b> Focused hemodynamic assessment: Heart morphology/performance/filling state, pericardial effusion/tamponade, IVC variations, valvular lesions.  <b>PROCEDURES:</b> Pericardio-centesis. US-guided TC & IV pacing, ROSC evaluation.  <b>MANAGEMENT:</b> <i>Cardio-circulatory Protocols &amp; Interactive Cases [FEEL, FATE, US ACLS]</i> <b>Dr Deepak Govil</b>		14:00	<b>CASE BASED INTERACTIVE SESSION</b>  <b>Dr Deepak Govil</b>
	15:20	<b>ULTRASOUND PRACTICE:</b> Circulation. US Advanced Cardiac Life Support [US-ACLS].  <b>ALL FACULTY</b>	<b>USLS</b>	14:40	<b>ULTRASOUND LIFE SUPPORT PROTOCOLS:</b> <i>US Trauma Life Support [US TLS]</i> <i>US Advanced Cardiac Life Support [US ACLS]</i>
<b>H A N D S O N</b>	15:20	<b>ULTRASOUND PRACTICE:</b> Circulation. US Advanced Cardiac Life Support [US-ACLS].  <b>ALL FACULTY</b>	<b>H A N D S O N</b>	16:40	<b>ULTRASOUND PRACTICE:</b> Circulation, Disability. Secondary Management & Monitoring. US Trauma Life Support [US-TLS]  <b>ALL FACULTY</b>
	17:00	<b>SESSION CLOSURE</b>		18:00	<b>SESSION CLOSURE</b>

# The "LEVEL 1" ULTRASOUND-ENHANCED CRITICAL MANAGEMENT CYCLE

## 1. "ABCDE" PRIMARY ASSESSMENT (FAST-ABCDE: Vital signs, anomalies, detectable causes, responses, complications)



## 2. "ABCDE" RESUSCITATION (FAST-ABCDE: electric, respiratory, fluid/drug, interventional, operative treatment)



## 3. "HEAD-to-TOE" SECONDARY ASSESSMENT



## 5. CONTINUING FOLLOW UP

SERIAL Examinations & MONITORING

Assess anatomy, vital functions, lesions, failures, and causes - Address electric, respiratory, fluid/drug, interventional, and operative resuscitation  
Provide pre/intra/post- interventional/operative guidance - Evaluate and monitor treatment efficacy - Detect and treat complications - Re-assess

