



USLS AL1 ~ PROVIDER

ULTRASOUND LIFE SUPPORT

[ULTRASOUND LIFE SUPPORT - ADVANCED LEVEL 1 PROVIDER]



August 3rd-5th, 2015

**Venue: Medanta The Medicity
2nd Floor Auditorium, Gurgaon**

WINFOCUS (World Interactive Network Focused On Critical UltraSound)

The world leader scientific organization committed to develop point-of-care ultrasound practice, research, education, technology, and networking, addressing the needs of patients, institutions, services, and communities in "critical" scenarios.

WINFOCUS Vision and Mission Statements

Improving Primary, Emergency, and Critical Care Medicine, by incorporating "point-of-care" Ultrasound into Clinical Practice ... bringing quality "Point-of-care" Ultrasound to the patient in all out-of-hospital and in-hospital "critical" scenarios, by developing and fostering, on a global and multi-disciplinary basis, Ultrasound Education, Technological Development, Evidence-based Research, and International Teamwork

COURSE DIRECTOR

Prof. (Dr) Luca Neri

WINFOCUS DELHI ITO DIRECTOR

Dr Deepak Govil

FACULTY

Dr Carmela Graci
Dr Shrikanth Srinivasan
Dr Sachin Gupta
Dr Sweta J. Patel
Dr Jagadeesh KN

FOR REGISTRATIONS CONTACT

Dr Sachin Gupta

Liver Transplant & Gastro ICU
2nd Floor, ICU-10
Medanta - The Medicity
Sector- 38, Gurgaon -122001 (HR)
Ph: +919873240734
Email: intensivecarecme@gmail.com

“CRITICAL ULTRASOUND”

The concept of 'critical ultrasound' evolved recently from 'emergency ultrasound' performed at the 'point-of-care' in scenarios such as emergency departments, ICUs, pre-hospital care, austere environments, disaster scenes, tactical operations, and humanitarian care missions. Clinical scenarios turn into 'critical' ones when there is a dangerous performance gap between the patient status and the resources available for an appropriate decision making and problem solving.

In such settings ultrasound point-of-care image acquisition and interpretation, integrated with advanced life support protocols (ACLS, ATLS) according 'ABCDE' and 'Head-to-toes' -type approaches, allows for rapid and effective decision making, enhanced triage, diagnosis, therapy, monitoring, and follow up. Nowadays, that's approach is also known as 'Ultrasound Life Support'. This typically occurs in the acutely ill patient (*Emergency US*) or intensive (*Intensive/Critical Care US*), and/or where human or technical resources are particularly limited (*Screening US, Triage US, Remote US, Primary US*).

SCIENTIFIC PROGRAM

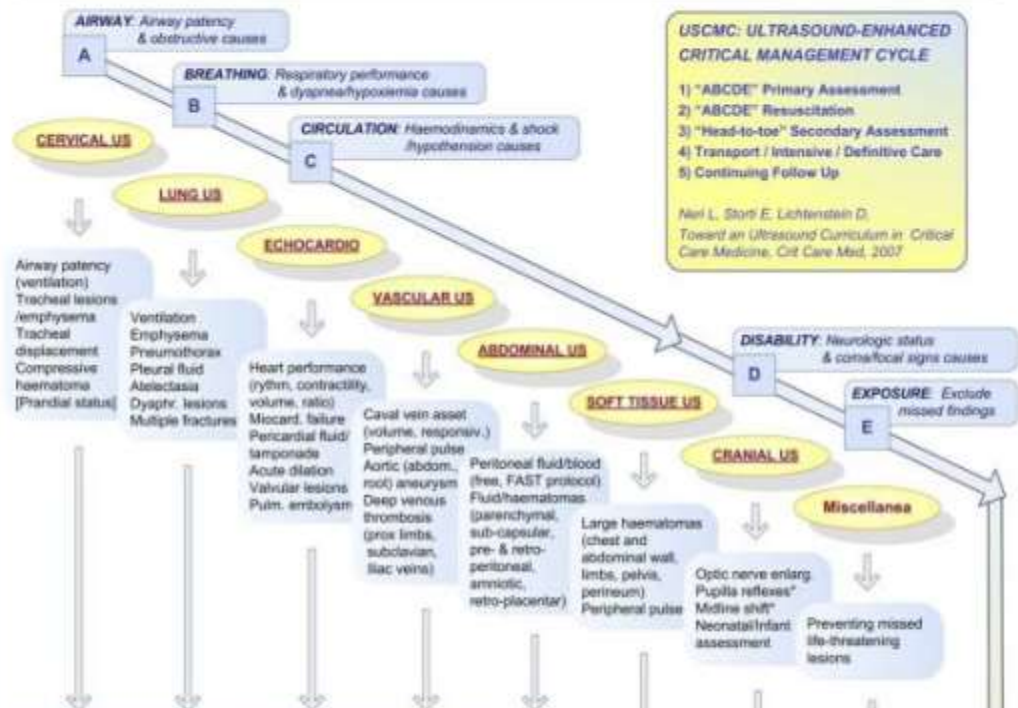
Day 1 : August 4th, 2015

TIME	TOPICS
0830 – 0900	Breakfast and Registration
0900 – 0915	Introduction
0915 – 1000	ABCDE US-enhanced primary assessment
1000 – 1030	Ultrasound-enhanced advanced head & neck assessment
1030 – 1100	Ultrasound-enhanced advanced chest assessment
1100 – 1130	Tea / Coffee Break
1130 – 1200	Ultrasound-enhanced advanced heart assessment
1200 – 1230	Ultrasound-enhanced advanced abdominal assessment
1230 – 1300	Ultrasound-enhanced advanced limbs & soft tissues assessment
1300 – 1400	Lunch Break
1400 – 1900	HOT (Hands On Training) rotations
	A – Head & neck B – Lung C – Heart D – Abdomen E – MSK F – Procedures
	Head to Toe US advanced evaluation
	Station A Station B Station C Station D Station E Station F
1400 – 1445	Group 1 Group 2 Group 3 Group 4 Group 5 Group 6
1445 – 1530	Group 6 Group 1 Group 2 Group 3 Group 4 Group 5
1530 – 1615	Group 5 Group 6 Group 1 Group 2 Group 3 Group 4
1615 – 1645	Tea / Coffee Break
1645 – 1730	Group 4 Group 5 Group 6 Group 1 Group 2 Group 3
1730 – 1815	Group 3 Group 4 Group 5 Group 6 Group 1 Group 2
1815 – 1900	Group 2 Group 3 Group 4 Group 5 Group 6 Group 1

Day 2 : August 5th, 2015

0830 – 0900	Review of Day 1 and Breakfast
0900 – 0930	US-enhanced procedures
0930 – 1015	US-enhanced cardiac arrest & periarrest algorithms
1015 – 1045	US-enhanced acute abdomen & trauma algorithms
1045 – 1115	Tea / Coffee Break
1115 – 1130	US-enhanced management in critical care – scenario demonstration
1130 – 1700	HOS (Hands On Simulation) rotations
	A – Cardiac arrest B – B-failure C – C-failure D – Acute abdomen E – Trauma F – Procedures
	Simulated US-enhanced critical care scenarios
	Station A Station B Station C Station D Station E Station F
1130 – 1215	Group 1 Group 2 Group 3 Group 4 Group 5 Group 6
1215 – 1300	Group 6 Group 1 Group 2 Group 3 Group 4 Group 5
1300 – 1400	Lunch Break
1400 – 1445	Group 5 Group 6 Group 1 Group 2 Group 3 Group 4
1445 – 1530	Group 4 Group 5 Group 6 Group 1 Group 2 Group 3
1530 – 1615	Group 3 Group 4 Group 5 Group 6 Group 1 Group 2
1615 – 1700	Group 2 Group 3 Group 4 Group 5 Group 6 Group 1
1700 – 1730	USLS-AL1 P Course conclusion
1730 – 1800	Faculty meeting

1. "ABCDE" PRIMARY ASSESSMENT (FAST-ABCDE: Vital signs, anomalies, detectable causes, responses, complications)



2. "ABCDE" RESUSCITATION (FAST-ABCDE: electric, respiratory, fluid/drug, interventional, operative treatment)



3. "HEAD-to-TOE" SECONDARY ASSESSMENT



5. CONTINUING FOLLOW UP

SERIAL Examinations & MONITORING

Assess anatomy, vital functions, lesions, failures, and causes - Address electric, respiratory, fluid/drug, interventional, and operative resuscitation - Provide pre/intra/post- interventional/operative guidance - Evaluate and monitor treatment efficacy - Detect and treat complications - Re-assess

